

STA 060108* DES

TRACT OR SURVEY NO. FOREST

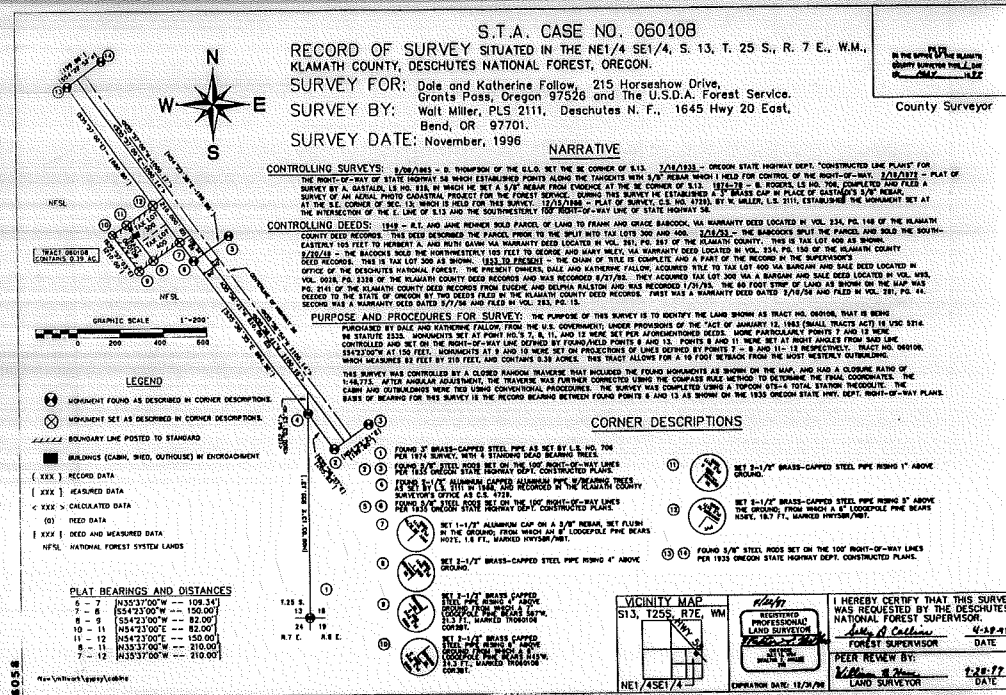
25/7 S.13 SURVEY DIAGRAM

* See Also STA 060110 #1030

1999

LEGEND

○ = Corner having information on form 7100-52 in this file.



S.T.A. CASE NO. 060108
 RECORD OF SURVEY SITUATED IN THE NE1/4 SE1/4, S. 13, T. 25 S., R. 7 E., W.M.,
 KLAMATH COUNTY, DESCHUTES NATIONAL FOREST, OREGON.
 SURVEY FOR: Dale and Katherine Follow, 215 Horseshoe Drive,
 Grants Pass or Oregon 97526 and Dale and Katherine Follow, S.D.A.
 SURVEY BY: Wolf Miller, PLS 2111, Deschutes N. F., 1645 Hwy 20 East,
 Bend, OR 97701.
 SURVEY DATE: November, 1996

PLAT BEARINGS AND DISTANCES
 COUNTY SURVEYOR

NARRATIVE

CONTROLLING SURVEYS: 8/28/1885 - B. THOMPSON OF THE U.S.O. SET THE SE CORNER OF S.13, T.25/23N - OREGON STATE HIGHWAY DEPT. "CONSTRUCTED LINE PLAIN" FOR THE RIGHT-OF-WAY OF STATE HIGHWAY 38 THROU ESTABLISHED POINTS ALONG THE THROUGHTS WITH 8 1/2" NEARBY (WELL) HELD FOR CONTROL, OF THE RIGHT-OF-WAY 174.2222' - PLAT OF SURVEY BY A. WATKIN, L.S. NO. 818, IN WHICH HE SET A 3/4" NEARBY FROM EVIDENCE AT THE SE CORNER OF S.13, T.25-23 - B. RECORDS, L.S. NO. 102, COMPLETED AND FILED IN THE U.S. OFFICE OF THE REGISTER OF DEEDS AT BEND, OREGON. THIS WAS THE ONLY ESTABLISHMENT OF 3/4" BRASS CAP IN PLACE OF SATELITE SURVEY. A SURVEY OF AN AERIAL PHOTO CADASTRAL PROJECT FOR THE FOREST SERVICE, WHICH WAS MADE BY ESTABLISHMENT OF 3/4" BRASS CAP IN PLACE OF SATELITE SURVEY. AT THE S.E. CORNER OF SEC. 13, WHICH IS HELD FOR THIS SURVEY, 12/12/1918 - PLAT OF SURVEY, U.S. NO. 4133, BY W. MILLER, L.S. NO. 2111, ESTABLISHED THE MONUMENT SET AT THE INTERSECTION OF THE E. LINE OF S.13 AND THE SOUTHWESTERN THE RIGHT-OF-WAY LINE OF STATE HIGHWAY 38.

CONTROLLING DEEDS: 1918 - B.L. JANE RANCHED BIRD PARCEL OF LAND TO FRANK AND GRACE BARCOCK, WA WARRANTY DEED LOCATED IN VOL. 234, PG. 148 OF THE KLAMATH COUNTY DEED RECORDS. THIS DEED DESCRIBED THE PARCEL, MORE TO THE SPLIT INTO TWO LOTS 300 AND 400. 7/13/23 - THE BARCOCKS SPLIT THE PARCEL AND SOLD THE SOUTHWESTERN 145 FEET TO HERBERT A. AND RUTH GAINN WA WARRANTY DEED LOCATED IN VOL. 281, PG. 287 OF THE KLAMATH COUNTY. THIS IS THE LOT 400 AS SHOWN. EASTERN 145 FEET TO HERBERT A. AND RUTH GAINN WA WARRANTY DEED LOCATED IN VOL. 254, PG. 134 OF THE KLAMATH COUNTY DEED RECORDS. 1/20/24 - THE BARCOCKS SOLD THE NORTHWESTERN 120 FEET TO GEORGE AND MARY WELLS, WA WARRANTY DEED LOCATED IN VOL. 254, PG. 134 OF THE KLAMATH COUNTY DEED RECORDS. THIS IS THE LOT 300 AS SHOWN. 1933 TO PRESENT - THE CLAIM OF TITLE IS COMPLETE AND A PART OF THE RECORD IN THE SUPERVISOR'S OFFICE OF THE DESCHUTES NATIONAL FOREST. THE PRESENT OWNERS, DALE AND KATHERINE FOLLOW, ACQUIRED TITLE TO THE LOT 400 WA BARGAIN AND SALE DEED LOCATED IN VOL. 5018, PG. 1338 OF THE KLAMATH COUNTY DEED RECORDS AND WAS RECORDED 4/27/76. THEY ACQUIRED THE LOT 300 WA BARGAIN AND SALE DEED LOCATED IN VOL. 5018, PG. 1338 OF THE KLAMATH COUNTY DEED RECORDS AND WAS RECORDED 1/29/76. THE 88 FOOT STRIP OF LAND AS SHOWN ON THE MAP WAS DECEDED TO THE STATE OF OREGON BY TWO DEEDS FILED IN THE KLAMATH COUNTY DEED RECORDS. FIRST WAS A WARRANTY DEED DATED 2/19/74 AND FILED IN VOL. 281, PG. 14. SECOND WAS A WARRANTY DEED DATED 8/7/74 AND FILED IN VOL. 283, PG. 15.

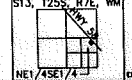
PURPOSE AND PROCEDURES FOR SURVEY: THE PURPOSE OF THIS SURVEY IS TO IDENTIFY THE LAND SHOWN AS TRACT NO. 060108, THAT IS BEING PURCHASED BY DALE AND KATHERINE FOLLOW, FROM THE U.S. GOVERNMENT, UNDER PROVISIONS OF THE "ACT OF JUNE 12, 1943 (SMALL TRACTS ACT) IN USC 2716. THE STATUTE ISSU. MONUMENTS SET AT POINT NOS. 2, 8, 11, 10, AND 12 WERE SET FOR ALPHABETICALLY DEEDS. NONE PARTICULARLY POINTS 2 AND 12 WERE CONTROLLED AND SET ON THE RIGHT-OF-WAY LINE DEFINED BY FORMED POINTS 8 AND 13. POINTS 8 AND 11 WERE SET AT RIGHT ANGLES FROM SADDLE LINE 241/20'W AT 100 FEET. MONUMENTS AT 8 AND 10 WERE SET ON PROJECTIONS OF LINES DEFINED BY POINTS 7, 8 AND 10 - 11 IS BEING CONTROLLED. TRACT NO. 060108, WHICH MEASURES 82 FEET BY 210 FEET, AND CONTAINS 8.39 ACRES. THIS TRACT ALLOWS FOR A 10 FOOT INTRUSION FROM THE MOST WESTERN SADDLE LINE.

THIS SURVEY WAS CONTROLLED BY A CLOSED BARRACK TRAVERSE THAT INCLUDED THE FOUR MONUMENTS SHOWN ON THE MAP, AND ALSO A CLOSED WALKING OF THE TRACTS. AFTER ANGULAR ADJUSTMENT, THE TRAVERSE WAS FURTHER CONNECTED USING THE CLOSEST RANGE METHOD TO DETERMINE THE FINAL COORDINATE, THE CATCH AND OUTSIDINGS WERE THEN USING CONVENTIONAL PROCEDURES. THE SURVEY WAS COMPLETED USING THE MONUMENTS AT POINTS 13, 14, 15, 16, 17, 18, 19, 20, 21, 22, 23, 24, 25, 26, 27, 28, 29, 30, 31, 32, 33, 34, 35, 36, 37, 38, 39, 40, 41, 42, 43, 44, 45, 46, 47, 48, 49, 50, 51, 52, 53, 54, 55, 56, 57, 58, 59, 60, 61, 62, 63, 64, 65, 66, 67, 68, 69, 70, 71, 72, 73, 74, 75, 76, 77, 78, 79, 80, 81, 82, 83, 84, 85, 86, 87, 88, 89, 90, 91, 92, 93, 94, 95, 96, 97, 98, 99, 100.

CORNER DESCRIPTIONS

- 1 FOUND 3/4" BRASS-CAPPED STEEL PIPE 8" SET BY L.S. NO. 706 FOR 1874 SURVEY, WITH 8 STANDING DEED BEARING TRAILS
- 2 FOUND 1/2" BRASS-CAPPED STEEL PIPE 8" SET BY L.S. NO. 706 FOR 1874 SURVEY, WITH 8 STANDING DEED BEARING TRAILS
- 3 FOUND 1/2" BRASS-CAPPED STEEL PIPE 8" SET BY L.S. NO. 706 FOR 1874 SURVEY, WITH 8 STANDING DEED BEARING TRAILS
- 4 FOUND 1/2" BRASS-CAPPED STEEL PIPE 8" SET BY L.S. NO. 706 FOR 1874 SURVEY, WITH 8 STANDING DEED BEARING TRAILS
- 5 SET 1-1/2" ALUMINUM CAP ON A 3/4" NEARBY, SET FLUSH IN THE GROUND, FROM WHICH WAS A LODGEPOLE PINE BEARS POINT 13, L.S. NO. 2111, BARCOCK WITNESS/74.
- 6 SET 1-1/2" BRASS-CAPPED STEEL PIPE 8" ABOVE GROUND.
- 7 SET 1-1/2" BRASS-CAPPED STEEL PIPE 8" ABOVE GROUND.
- 8 SET 1-1/2" BRASS-CAPPED STEEL PIPE 8" ABOVE GROUND.
- 9 SET 1-1/2" BRASS-CAPPED STEEL PIPE 8" ABOVE GROUND.
- 10 SET 1-1/2" BRASS-CAPPED STEEL PIPE 8" ABOVE GROUND.
- 11 SET 1-1/2" BRASS-CAPPED STEEL PIPE 8" ABOVE GROUND.
- 12 SET 1-1/2" BRASS-CAPPED STEEL PIPE 8" ABOVE GROUND.
- 13 SET 1-1/2" BRASS-CAPPED STEEL PIPE 8" ABOVE GROUND.
- 14 SET 1-1/2" BRASS-CAPPED STEEL PIPE 8" ABOVE GROUND.
- 15 SET 1-1/2" BRASS-CAPPED STEEL PIPE 8" ABOVE GROUND.
- 16 SET 1-1/2" BRASS-CAPPED STEEL PIPE 8" ABOVE GROUND.
- 17 SET 1-1/2" BRASS-CAPPED STEEL PIPE 8" ABOVE GROUND.
- 18 SET 1-1/2" BRASS-CAPPED STEEL PIPE 8" ABOVE GROUND.
- 19 SET 1-1/2" BRASS-CAPPED STEEL PIPE 8" ABOVE GROUND.
- 20 SET 1-1/2" BRASS-CAPPED STEEL PIPE 8" ABOVE GROUND.
- 21 SET 1-1/2" BRASS-CAPPED STEEL PIPE 8" ABOVE GROUND.
- 22 SET 1-1/2" BRASS-CAPPED STEEL PIPE 8" ABOVE GROUND.
- 23 SET 1-1/2" BRASS-CAPPED STEEL PIPE 8" ABOVE GROUND.
- 24 SET 1-1/2" BRASS-CAPPED STEEL PIPE 8" ABOVE GROUND.
- 25 SET 1-1/2" BRASS-CAPPED STEEL PIPE 8" ABOVE GROUND.
- 26 SET 1-1/2" BRASS-CAPPED STEEL PIPE 8" ABOVE GROUND.
- 27 SET 1-1/2" BRASS-CAPPED STEEL PIPE 8" ABOVE GROUND.
- 28 SET 1-1/2" BRASS-CAPPED STEEL PIPE 8" ABOVE GROUND.
- 29 SET 1-1/2" BRASS-CAPPED STEEL PIPE 8" ABOVE GROUND.
- 30 SET 1-1/2" BRASS-CAPPED STEEL PIPE 8" ABOVE GROUND.
- 31 SET 1-1/2" BRASS-CAPPED STEEL PIPE 8" ABOVE GROUND.
- 32 SET 1-1/2" BRASS-CAPPED STEEL PIPE 8" ABOVE GROUND.
- 33 SET 1-1/2" BRASS-CAPPED STEEL PIPE 8" ABOVE GROUND.
- 34 SET 1-1/2" BRASS-CAPPED STEEL PIPE 8" ABOVE GROUND.
- 35 SET 1-1/2" BRASS-CAPPED STEEL PIPE 8" ABOVE GROUND.
- 36 SET 1-1/2" BRASS-CAPPED STEEL PIPE 8" ABOVE GROUND.
- 37 SET 1-1/2" BRASS-CAPPED STEEL PIPE 8" ABOVE GROUND.
- 38 SET 1-1/2" BRASS-CAPPED STEEL PIPE 8" ABOVE GROUND.
- 39 SET 1-1/2" BRASS-CAPPED STEEL PIPE 8" ABOVE GROUND.
- 40 SET 1-1/2" BRASS-CAPPED STEEL PIPE 8" ABOVE GROUND.
- 41 SET 1-1/2" BRASS-CAPPED STEEL PIPE 8" ABOVE GROUND.
- 42 SET 1-1/2" BRASS-CAPPED STEEL PIPE 8" ABOVE GROUND.
- 43 SET 1-1/2" BRASS-CAPPED STEEL PIPE 8" ABOVE GROUND.
- 44 SET 1-1/2" BRASS-CAPPED STEEL PIPE 8" ABOVE GROUND.
- 45 SET 1-1/2" BRASS-CAPPED STEEL PIPE 8" ABOVE GROUND.
- 46 SET 1-1/2" BRASS-CAPPED STEEL PIPE 8" ABOVE GROUND.
- 47 SET 1-1/2" BRASS-CAPPED STEEL PIPE 8" ABOVE GROUND.
- 48 SET 1-1/2" BRASS-CAPPED STEEL PIPE 8" ABOVE GROUND.
- 49 SET 1-1/2" BRASS-CAPPED STEEL PIPE 8" ABOVE GROUND.
- 50 SET 1-1/2" BRASS-CAPPED STEEL PIPE 8" ABOVE GROUND.
- 51 SET 1-1/2" BRASS-CAPPED STEEL PIPE 8" ABOVE GROUND.
- 52 SET 1-1/2" BRASS-CAPPED STEEL PIPE 8" ABOVE GROUND.
- 53 SET 1-1/2" BRASS-CAPPED STEEL PIPE 8" ABOVE GROUND.
- 54 SET 1-1/2" BRASS-CAPPED STEEL PIPE 8" ABOVE GROUND.
- 55 SET 1-1/2" BRASS-CAPPED STEEL PIPE 8" ABOVE GROUND.
- 56 SET 1-1/2" BRASS-CAPPED STEEL PIPE 8" ABOVE GROUND.
- 57 SET 1-1/2" BRASS-CAPPED STEEL PIPE 8" ABOVE GROUND.
- 58 SET 1-1/2" BRASS-CAPPED STEEL PIPE 8" ABOVE GROUND.
- 59 SET 1-1/2" BRASS-CAPPED STEEL PIPE 8" ABOVE GROUND.
- 60 SET 1-1/2" BRASS-CAPPED STEEL PIPE 8" ABOVE GROUND.
- 61 SET 1-1/2" BRASS-CAPPED STEEL PIPE 8" ABOVE GROUND.
- 62 SET 1-1/2" BRASS-CAPPED STEEL PIPE 8" ABOVE GROUND.
- 63 SET 1-1/2" BRASS-CAPPED STEEL PIPE 8" ABOVE GROUND.
- 64 SET 1-1/2" BRASS-CAPPED STEEL PIPE 8" ABOVE GROUND.
- 65 SET 1-1/2" BRASS-CAPPED STEEL PIPE 8" ABOVE GROUND.
- 66 SET 1-1/2" BRASS-CAPPED STEEL PIPE 8" ABOVE GROUND.
- 67 SET 1-1/2" BRASS-CAPPED STEEL PIPE 8" ABOVE GROUND.
- 68 SET 1-1/2" BRASS-CAPPED STEEL PIPE 8" ABOVE GROUND.
- 69 SET 1-1/2" BRASS-CAPPED STEEL PIPE 8" ABOVE GROUND.
- 70 SET 1-1/2" BRASS-CAPPED STEEL PIPE 8" ABOVE GROUND.
- 71 SET 1-1/2" BRASS-CAPPED STEEL PIPE 8" ABOVE GROUND.
- 72 SET 1-1/2" BRASS-CAPPED STEEL PIPE 8" ABOVE GROUND.
- 73 SET 1-1/2" BRASS-CAPPED STEEL PIPE 8" ABOVE GROUND.
- 74 SET 1-1/2" BRASS-CAPPED STEEL PIPE 8" ABOVE GROUND.
- 75 SET 1-1/2" BRASS-CAPPED STEEL PIPE 8" ABOVE GROUND.
- 76 SET 1-1/2" BRASS-CAPPED STEEL PIPE 8" ABOVE GROUND.
- 77 SET 1-1/2" BRASS-CAPPED STEEL PIPE 8" ABOVE GROUND.
- 78 SET 1-1/2" BRASS-CAPPED STEEL PIPE 8" ABOVE GROUND.
- 79 SET 1-1/2" BRASS-CAPPED STEEL PIPE 8" ABOVE GROUND.
- 80 SET 1-1/2" BRASS-CAPPED STEEL PIPE 8" ABOVE GROUND.
- 81 SET 1-1/2" BRASS-CAPPED STEEL PIPE 8" ABOVE GROUND.
- 82 SET 1-1/2" BRASS-CAPPED STEEL PIPE 8" ABOVE GROUND.
- 83 SET 1-1/2" BRASS-CAPPED STEEL PIPE 8" ABOVE GROUND.
- 84 SET 1-1/2" BRASS-CAPPED STEEL PIPE 8" ABOVE GROUND.
- 85 SET 1-1/2" BRASS-CAPPED STEEL PIPE 8" ABOVE GROUND.
- 86 SET 1-1/2" BRASS-CAPPED STEEL PIPE 8" ABOVE GROUND.
- 87 SET 1-1/2" BRASS-CAPPED STEEL PIPE 8" ABOVE GROUND.
- 88 SET 1-1/2" BRASS-CAPPED STEEL PIPE 8" ABOVE GROUND.
- 89 SET 1-1/2" BRASS-CAPPED STEEL PIPE 8" ABOVE GROUND.
- 90 SET 1-1/2" BRASS-CAPPED STEEL PIPE 8" ABOVE GROUND.
- 91 SET 1-1/2" BRASS-CAPPED STEEL PIPE 8" ABOVE GROUND.
- 92 SET 1-1/2" BRASS-CAPPED STEEL PIPE 8" ABOVE GROUND.
- 93 SET 1-1/2" BRASS-CAPPED STEEL PIPE 8" ABOVE GROUND.
- 94 SET 1-1/2" BRASS-CAPPED STEEL PIPE 8" ABOVE GROUND.
- 95 SET 1-1/2" BRASS-CAPPED STEEL PIPE 8" ABOVE GROUND.
- 96 SET 1-1/2" BRASS-CAPPED STEEL PIPE 8" ABOVE GROUND.
- 97 SET 1-1/2" BRASS-CAPPED STEEL PIPE 8" ABOVE GROUND.
- 98 SET 1-1/2" BRASS-CAPPED STEEL PIPE 8" ABOVE GROUND.
- 99 SET 1-1/2" BRASS-CAPPED STEEL PIPE 8" ABOVE GROUND.
- 100 SET 1-1/2" BRASS-CAPPED STEEL PIPE 8" ABOVE GROUND.

WILSONY MAP



I HEREBY CERTIFY THAT THIS SURVEY WAS REQUESTED BY THE DESCHUTES NATIONAL FOREST SUPERVISOR.

REGISTERED PROFESSIONAL LAND SURVEYOR
 Dale A. Callahan
 DATE 4-28-98

FOREST SUPERVISOR
 DATE

TRACER REVIEW BY:
 DATE 2-28-77

LAND SURVEYOR
 DATE

CHRONICLE DATE: 12/21/96

No Cards Made: See Plat(s) in Both Hanging File and Legal (Both Mylar)

POD 6/25/97

INSTRUCTIONS

im in space at left.
 d record in numerical
 tract file guide as the
 d and recorded. Show
 , on the tract diagram
 having data in this file.

CORNER RECORD FILE GUIDE-(Metes & Bounds Surveys)

7100-56 (REV. 3/67)